

Features

- The trainer is designed for easy teaching and practicing about the automation system and to train students so they have high skill in the automation system for industries.
- The system consists of modular blocks to enable the student in learning PLC system in modular way. The panel type constructions are easy to handle by student when conducting the experiment.
- All inputs and outputs on each panel are equipped with robust 4-mm sockets for easy connection.
- Model (simulation) plant are included for plant implementation, so the training goals can be achieved straightforward and simple.
- Complete with comprehensive experiment manual book to guide student step by step in conducting experiments.

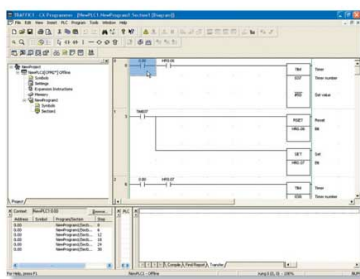
PLC Trainer

PT 970100AL

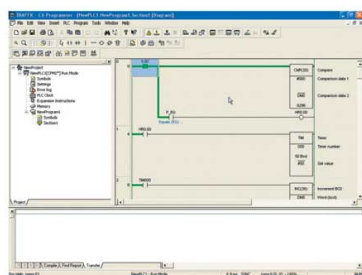


Covered Topics

- DE03001E Introduction to Programmable Logic Controller
- DE03002E Basic Programming
- DE03003E Outputs Instructions
- DE03004E Logic Instructions
- DE03005E Timer Instructions
- DE03006E Counter Instructions
- DE03007E Simulation to Run a Motor with a Contactor
- DE03008E Application of PLC in Traffic Light Control



Ladder editor



Online monitoring

Specification

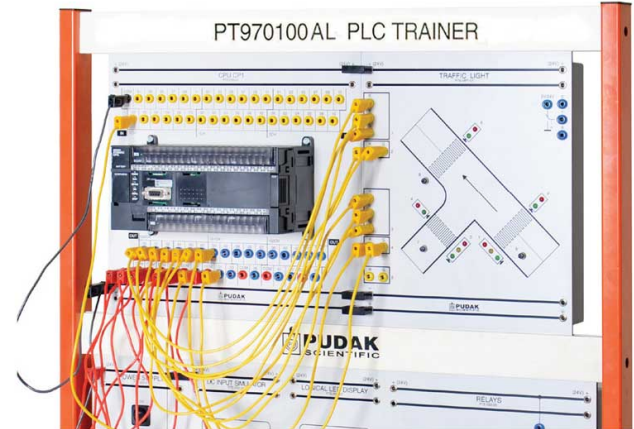
- **Power Supply [PTE-033-01]**
 - Output voltage : DC 24V
 - Output current : 2.1A
 - Input voltage : 220V / 50Hz
- **Main CPU [PTE-030-01]**
 - CPU : OMRON CP1
 - Program memory : 10K Steps
 - Data memory : read/write 32K Words
 - Interrupt inputs : 6
 - High speed counter
 - DC inputs : 36 inputs
 - DC outputs : 24 outputs
 - Analog control : 1 control (setting range: 0-255)
 - PID control instruction : yes (with analog I/O)
 - Built-in peripheral port : support host link, peripheral bus, no-protocol or Programming console connection
 - Built in RS232 port : support host link, peripheral bus, no-protocol 1:1 slave unit link, 1:1 master unit link, or 1:1 NT link connections
 - Max digital I/O capacity with additional I/O expansion units : 120 points
 - Max analog I/O with additional expansion units : 3 analog I/O unit (6 analog inputs 3 analog outputs)
- **Relays [PTE-033-05]**
 - DC inputs : 8 inputs
 - Relay outputs : 8 relay SPDT 220V, 0.5A
- **DC Input Simulator [PTE-033-06]**
 - 8 switches
 - Output voltage switch on : 24VDC
- **Logical LED Display [PTE-033-07]**
 - 16 LED as indicator
 - Inputs voltage : 24VDC

Continue >>

Training Panel System

>> Specification Continued

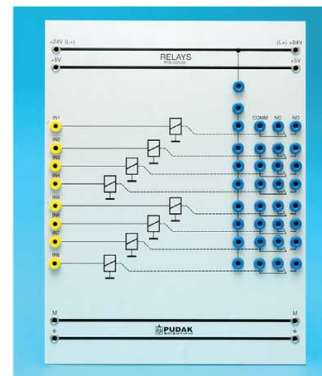
- **Traffic Light Model [PTE-MP1-01]**
Traffic light model to simulate junction of main road and a branch/minor road traffic light system inputs voltage: 24VDC
- **CX Programmer Software for PLC Programming [GSC 700]**
- **RS-232 Cable [GSE 230 02]**
- **Required Computer (Not included), with:**
 - Operating system minimum : Windows 98
 - USB port minimum : 1 pc
 - CD ROM



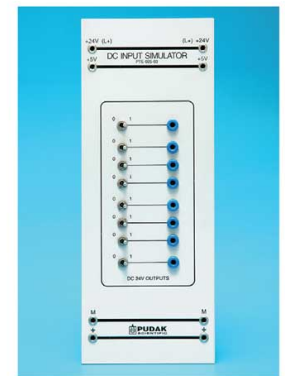
CPU Omron [PTE-030-01] with Model (Simulation) Plant

PT 970100AL PLC Trainer consists of

Cat. No.	Description	Qty.
PTE-033-01	Power Supply	1 pc
PTE-030-01	CPU CP1 Omron	1 pc
PTE-033-05	Relays	1 pc
PTE-033-06	DC Input Simulator	1 pc
PTE-033-07	Logical LED Display	1 pc
PTE-MP1-01	Traffic Light Model	1 pc
GSC 700	CD CX Programmer Software	1 pc
GSE 230 02	RS232 Cable	1 pc
FLS 20.02/097	Connecting Cross	40 pcs
KAL 99/40-050	Connecting Lead 50 cm, Yellow	40 pcs
KAL 99/10-050	Connecting Lead 50 cm, Black	10 pcs
KAL 99/20-050	Connecting Lead, 50 cm, Red	10 pcs
D03S-01E	Experiment Manual Book	1 pc
D03T-01E	CP1 Programming Manual Book	1 pc
GSN 240	TPS Frame 600 mm	1 set
	USB Cable	1 pc



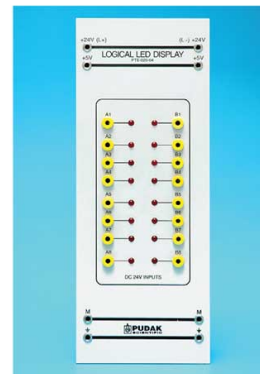
Relay Module
PTE-033-05



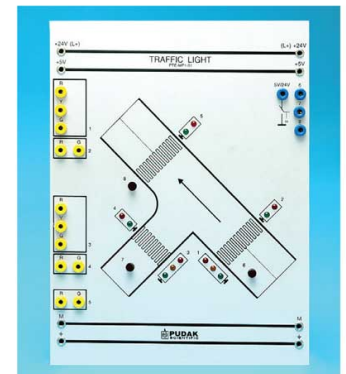
DC Input Simulator
PTE-033-06

Optional Model (Simulation) Plant

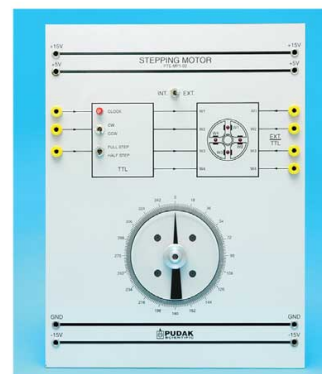
1. PTE-MP1-02 Stepper Motor
2. PTE-MP1-03 Washing Machine
3. PTE-MP1-04 Parking System
4. PTE-MP1-05 Tank System



Logical LED Display
PTE-033-07



Traffic Light Model
PTE-MP1-01



Stepper Motor Model
PTE-MP1-02

Specifications and illustrations are subject to change without prior notice